



EXPANDA

2017





**SMALL TO TOW,
BIG ON FREEDOM,
THE CLEVER EXPANDA
ACCOMMODATES
YOUR EVERY HOLIDAY
DESIRE**

Australians love a homegrown invention, and our locally developed Jayco Expanda is up there with the best of them.

Compact and easy to tow, yet offering the space and storage of a traditional Caravan or Pop Top, this feature-packed hybrid is both the perfect first RV for young families, and the ideal upgrade for Camper Trailer owners. For short getaways or long weekends, it can't be beaten.

Whether for sleeping or storage, space is a must-have for a relaxing holiday – doubly so if the kids tag along. The Expanda can fit the whole family in comfort thanks to the extendible beds which fold out for all the extra room you'll need.

Like every Jayco, the Expanda is designed for comfort, built to last, and equipped for effortless enjoyment. Setting up the stowable end beds, for example, is a four-step task that can be performed by one person in around a minute.

With one Caravan and eight Pop Top floor plans available, plus your choice of interior finishes, trims and optional accessories, you can tailor your Expanda right down to the smallest detail. You can even opt for an Outback version, and venture off the beaten track anytime you like.



- 
NATIONWIDE SUPPORT
100+ SERVICE AND DEALER LOCATIONS
- 
ROADSIDE ASSIST
3 YEARS 24 HOURS 365 DAYS
- 
WARRANTY PROGRAM
12 MONTHS' COMPREHENSIVE COVERAGE
- 
BETTER VALUE
MORE FEATURES FOR LESS
- 
GREAT RESALE VALUE
A SMARTER INVESTMENT IN THE LONG RUN

TAKE COMFORT IN EXPANDA'S SPACIOUS, FEATURE-RICH INTERIOR

Don't be fooled by Expanda's compact dimensions. With its bed ends extended you'll find all the room your family needs, all cleverly arranged into multiple living and leisure zones, so you can relax together under the one roof in air conditioned comfort.

Smart use of interior space also enables the Expanda to incorporate a range of top quality kitchen appliances, including a four-burner cooker, microwave and fridge, cupboards and drawers galore, plus discrete storage under each seat. Some floor plans offer en suite bathrooms complete with shower, while other creature comforts, like a flat screen TV or stereo system are available as optional accessories.

01 Large kitchen drawers. **02** Four-burner gas cooktop with electric hotplate and flame failure protection. **03** Stylish Sphere microwave. **04** Stylish dinette with your choice of durable designer fabrics. **05** Fridge/freezer with a sizeable capacity (174-litre in 18.58-2/20.64-1). **06** Fixed double bunks with convenient fold away buffet unit. **07** The rollout awning features integrated LED strip lighting.



EASY THREE-STEP SET UP

Once you arrive, it takes no time at all to set up your Expanda, so you can start enjoying your time away sooner.

- 1 Unlock and raise the bed end lid
- 2 Lower the bed end into place
- 3 Insert the roof bar and fold-out the mattress

JAYCO OUTBACK

Some of Australia's must-see destinations – the places you really want to explore – lie well beyond the bitumen. To help you see them, with all the comforts of home, each Jayco Expanda Caravan and Pop Top is also available in an Outback version, complete with a higher ground clearance, and a range of high-strength componentry and specialised features, including:

- JTECH Suspension
- 120W solar panel and regulator
- 100AH battery (Pop Top only, standard on Expanda Caravan)
- 150mm x 50mm rectangular hollow section chassis main members
- 125mm x 50mm rectangular hollow section A-frame
- AL-KO off-road electric brake magnets
- AL-KO outback drop jacks

- Protective aluminium checker plate on sides
- 15-inch alloy wheels with 235/75R15 tyres
- Pull-out single step
- External 12V auxiliary plug
- External Gas bayonet
- Jayco mud flaps

Opting for a Jayco Outback version is not a licence to bush bash. But its extra strength and enhanced specifications will free you to travel the country's unsealed roads safely and arrive relaxed. Even so, always take extra care and reduce your speed, especially when driving in unfamiliar territory. If in doubt, do what the 4WD experts do – use your Jayco as a base and head into rougher terrain without anything in tow.



JTECH SUSPENSION

Purpose designed to complement the Jayco Endurance Chassis, JTECH Suspension replaces beam axles with individual stub axles, allowing each wheel to react independently to the road surface, while also lessening the chassis' unsprung weight. Delivering greater stability, a smoother ride, more precise handling and increased ground clearance without increased ride height, it makes towing easier and safer than ever before.

Precision manufactured using automotive processes to ensure exact fitment, JTECH Suspension is the product of two years' research and development at Jayco's Melbourne headquarters, and countless kilometres of real world testing across the best and worst of Australian second class roads. Its features include:

- Electrocoated surfaces for optimum protection against corrosion and stone chips
- AL-KO stub axles, bearings and brakes that are suitable for fitment of AL-KO Electronic Stability Control
- Large diameter, heavy-duty Pedders off-road shock absorbers and coil springs designed specifically for Jayco RVs and Australian conditions
- Aeon rubber springs inside each coil spring, producing a progressing rate when the suspension is compressed; and
- Toe-in and toe-out adjustment for wheel alignment

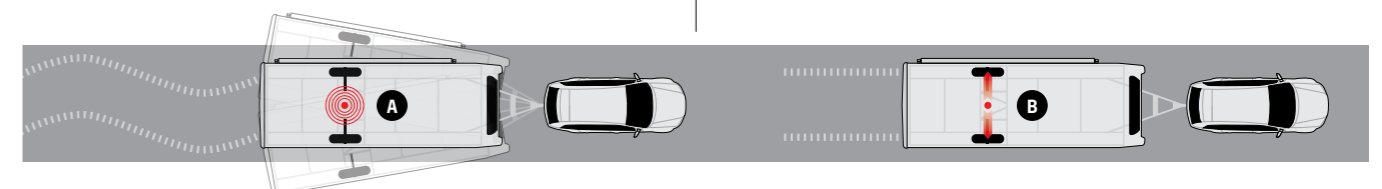


SAFETY FIRST, WITH AL-KO ELECTRONIC STABILITY CONTROL



A Critical swerve or sway is detected.

B Electronic Stability Control partially applies the RV brakes. The caravan is pulled into line behind the tow vehicle. The sway is stopped and the caravan brakes are released.



TOUGH FRAME

The Expanda is built with Jayco Tough Frame construction technology. Illustrated below, this four-layer vacuum-bonded wall is both stronger than those of conventional 'timber & tin' aluminium clad RVs, and offers greater thermal and acoustic insulation.

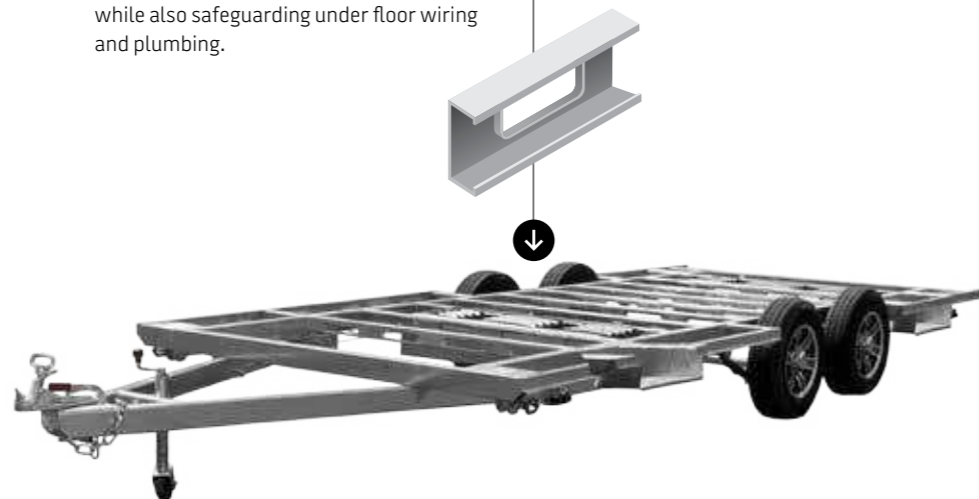


- 1 Hail and dent resistant, aerodynamic fibreglass exterior with a high gloss finish
- 2 Aluminium frame – not timber – for extra strength and longevity, plus galvanised plating for secure fitment of internal furniture
- 3 Internal high-density polystyrene foam for superior insulation
- 4 Internal 3mm plywood board CE coated for maximum durability

ENDURANCE CHASSIS

A Caravan is only as strong as the base on which it's built, so we build our Endurance Chassis to last like no other. Lightweight yet super strong, it's hot dip galvanised for lifelong protection against corrosion, and features PSC member floor support, which better resist bending and compression, while also safeguarding under floor wiring and plumbing.

Jayco Pressed Steel C-Section (PSC)
PSC floor members are lighter than conventional box section steel, 300% stronger and resist bending by 175%.



JAYCO OPTIONS ADD THAT PERSONAL TOUCH

It's through individual touches that the Jayco you choose becomes your own truly personal, home away from home. That's why we complement our range of feature-packed Caravan and Pop Top floor plans, with a selection of high quality optional extras—all of them designed to integrate seamlessly with your Jayco, operate effortlessly, and look fabulous.

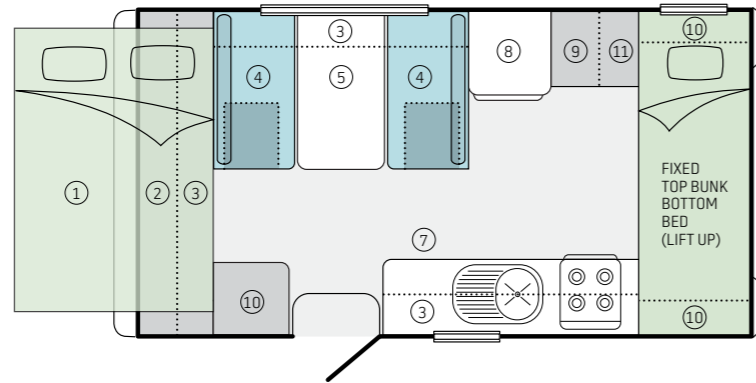
Should you need additional sleeping space from time to time, consider a bed converter. If you like to entertain, an external slideout BBQ could be the go. While a bike rack is a must for those who like to explore destinations on two wheels.

- 01 Catch your favourite shows on the 12 volt LED TV with DVD player
- 02 This handy foldout table unclips in an instant to provide the extra table space you need
- 03 Check water and battery levels at a glance with the Coast to Coast control panel
- 04 Optional on touring models, the 120W solar system with regulator gives you power to spare
- 05 An external shower, including pop up shower tent, helps keep dirt and sand outside, where it belongs
- 06 12-volt powered TV aerial to optimise reception quality
- 07 With a slide out BBQ you can entertain while you cook (select models only)
- 08 JHub app-driven control hub for managing your Expanda's on-board features
- 09 CD/Radio stereo system includes both indoor and outdoor speakers

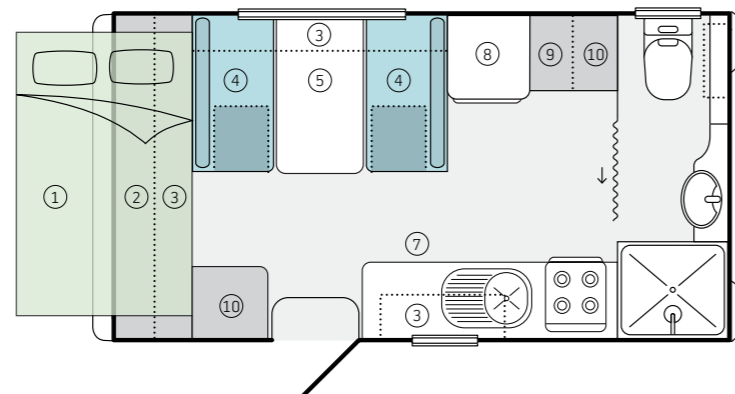


FLOOR PLANS

14 FT POP TOP		14.44-4 SINGLE AXLE		OB OUTBACK
Body (L) (mm)	4,563	Tare weight (kg)	1,440	1,635
Width (inc awning) (mm)	2,470	Tow ball (kg)	138	164
Interior (L) (mm)	4,290	Travel length (mm)	6,048	5,928
Interior (H) (mm)	2,115	Travel height (mm)	2,395	2,545

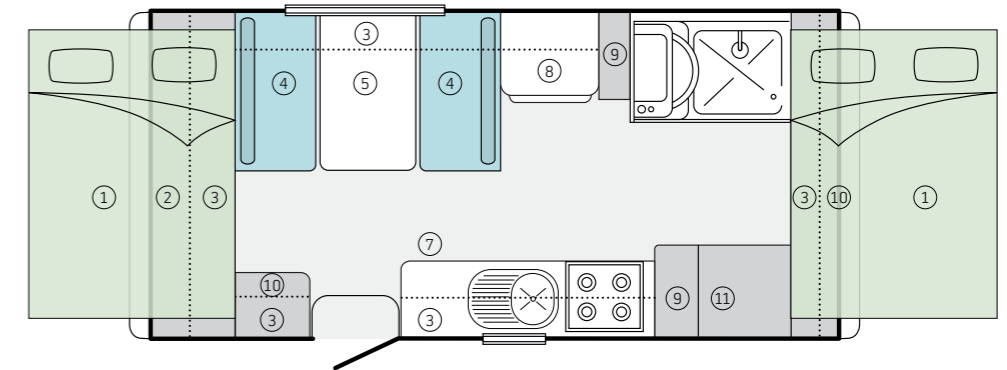


14 FT POP TOP		14.44-5 SINGLE AXLE		OB OUTBACK
Body (L) (mm)	4,563	Tare weight (kg)	1,536	1,710
Width (inc awning) (mm)	2,470	Tow ball (kg)	142	164
Interior (L) (mm)	4,290	Travel length (mm)	6,048	5,928
Interior (H) (mm)	2,115	Travel height (mm)	2,395	2,545

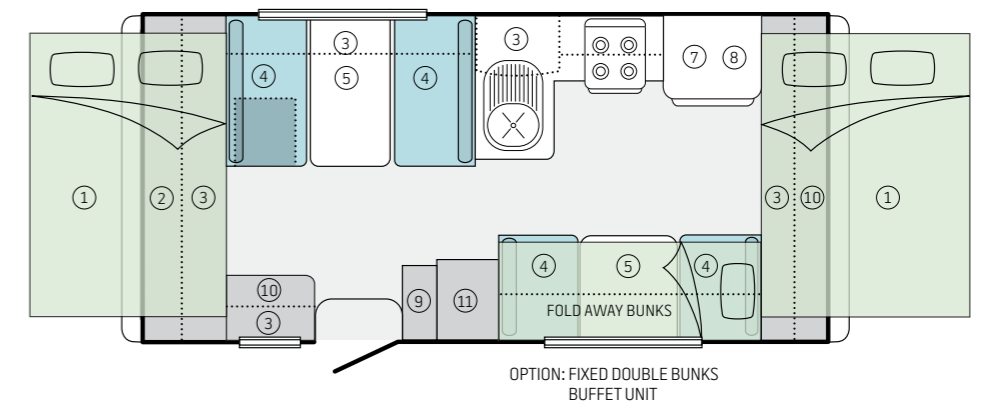


- Key**
- | | | | |
|---------------------|----------------|--------------|---------------------|
| 1. Fold out bed | 4. Seat | 7. Microwave | 10. Storage |
| 2. Front storage | 5. Table | 8. Fridge | 11. Robe |
| 3. Overhead storage | 6. Club Lounge | 9. Pantry | 12. Washing machine |

16 FT POP TOP		16.49-3 SINGLE AXLE		OB OUTBACK
Body (L) (mm)	5,190	Tare weight (kg)	1,700	1,875
Width (inc awning) (mm)	2,470	Tow ball (kg)	157	178
Interior (L) (mm)	4,730	Travel length (mm)	6,675	6,555
Interior (H) (mm)	2,115	Travel height (mm)	2,545	2,670



16 FT POP TOP		16.49-4 SINGLE AXLE		OB OUTBACK
Body (L) (mm)	5,190	Tare weight (kg)	1,565	1,780
Width (inc awning) (mm)	2,470	Tow ball (kg)	164	185
Interior (L) (mm)	4,730	Travel length (mm)	6,675	6,555
Interior (H) (mm)	2,115	Travel height (mm)	2,395	2,545



Jayco allow an amount of additional weight (Carrying Load) for each individual unit manufactured above the initial manufactured Tare Weight of the unit. This 'Carrying Load' is for the customers individual weight requirements and can be made up of 'any' additional weight they propose to load the unit with, e.g. water, food, clothes etc. The approximate standard unit carrying loads Jayco apply are; Single Axle, non internal shower units 300kg—Single Axle, internal shower units 375kg—Tandem Axle, non internal shower units 400kg—Tandem Axle, internal shower units 475kg. The tare and tow ball weight is only a guide and will change depending on accessories which are fitted to your van. It is advisable to discuss with your Jayco Representative.

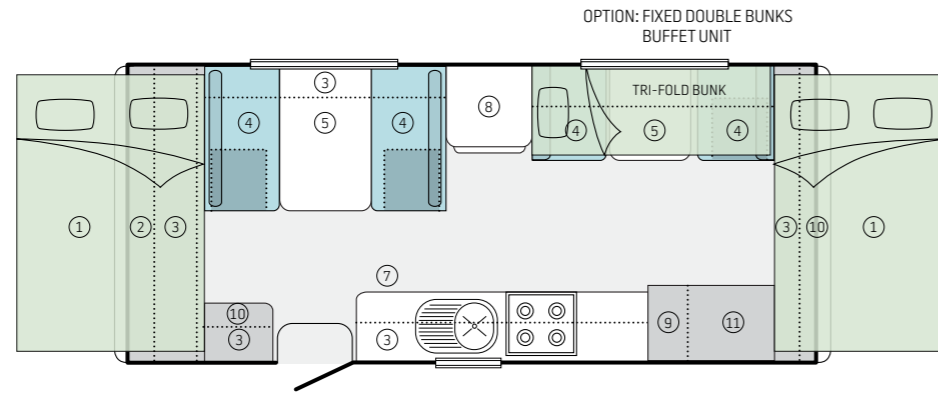
FLOOR PLANS

17 FT POP TOP

17.56-1 TANDEM AXLE

OB OUTBACK

Body (L) (mm)	5,658	Tare weight (kg)	1,740	2,085
Width (inc awning) (mm)	2,470	Tow ball (kg)	161	198
Interior (L) (mm)	5,200	Travel length (mm)	7,143	7,023
Interior (H) (mm)	2,115	Travel height (mm)	2,455	2,670

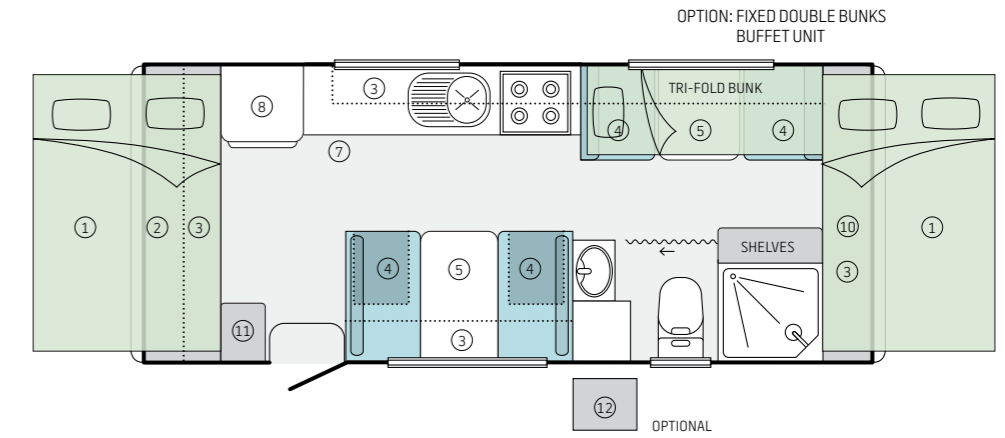


18 FT POP TOP

18.58-2 TANDEM AXLE

OB OUTBACK

Body (L) (mm)	5,922	Tare weight (kg)	1,965	2,210
Width (inc awning) (mm)	2,470	Tow ball (kg)	155	185
Interior (L) (mm)	5,460	Travel length (mm)	7,407	7,287
Interior (H) (mm)	2,115	Travel height (mm)	2,455	2,670

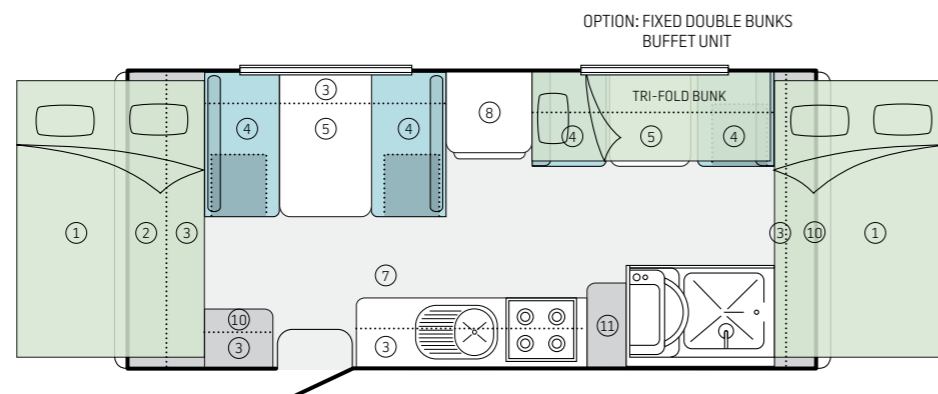


17 FT POP TOP

17.56-2 TANDEM AXLE

OB OUTBACK

Body (L) (mm)	5,658	Tare weight (kg)	1,865	2,145
Width (inc awning) (mm)	2,470	Tow ball (kg)	170	199
Interior (L) (mm)	5,200	Travel length (mm)	7,143	7,023
Interior (H) (mm)	2,115	Travel height (mm)	2,455	2,670

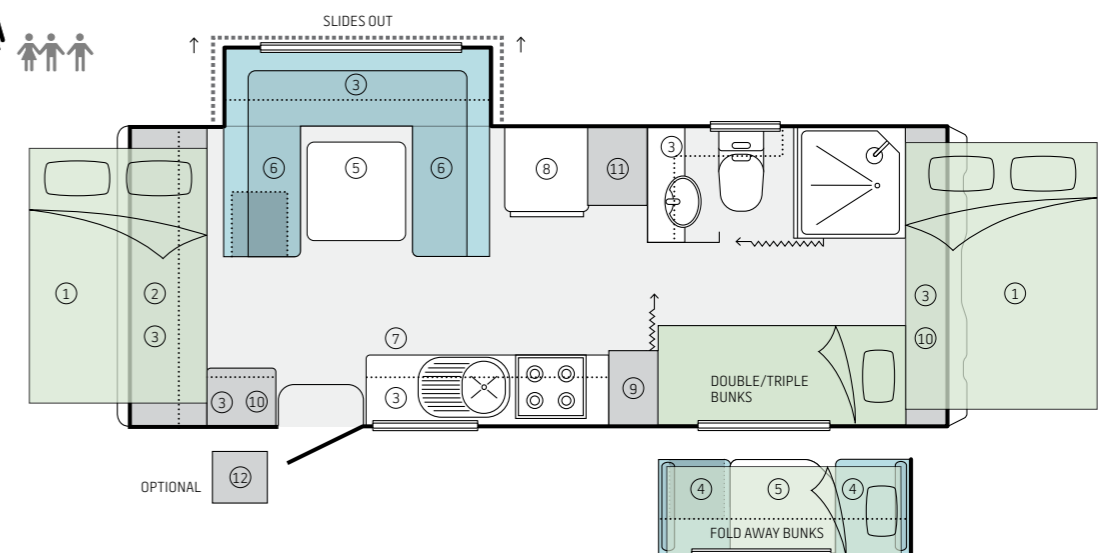


20 FT CARAVAN

20.64-1 TANDEM AXLE

OB OUTBACK

Body (L) (mm)	6449	Tare weight (kg)	2425	2525
Width (inc awning) (mm)	2470mm	Tow ball (kg)	230	230
Interior (L) (mm)	6170mm	Travel length (mm)	7928mm	7928mm
Interior (H) (mm)	1978mm	Travel height (mm)	2895mm	3040mm



- Key
- | | | | |
|---------------------|----------------|--------------|---------------------|
| 1. Fold out bed | 4. Seat | 7. Microwave | 10. Storage |
| 2. Front storage | 5. Table | 8. Fridge | 11. Robe |
| 3. Overhead storage | 6. Club Lounge | 9. Pantry | 12. Washing machine |

Jayco allow an amount of additional weight (Carrying Load) for each individual unit manufactured above the initial manufactured Tare Weight of the unit. This 'Carrying Load' is for the customers individual weight requirements and can be made up of 'any' additional weight they propose to load the unit with, e.g. water, food, clothes etc. The approximate standard unit carrying loads Jayco apply are; Single Axle, non internal shower units 300kg—Single Axle, internal shower units 375kg—Tandem Axle, non internal shower units 400kg—Tandem Axle, internal shower units 475kg. The tare and tow ball weight is only a guide and will change depending on accessories which are fitted to your van. It is advisable to discuss with your Jayco Representative.

INTERIOR FEATURES

- Standard
- Optional
- Not available
- * Selected layouts

	Pop Top	Outback	Caravan	Outback
Battery – Setec 12V/240V management system	●	●	●	●
Battery – 100amp deep cycle (Outback & shower models)	○	●	●	●
Bed converter	○	○	○	○
Bed – front large parents bed (1360mm wide)*	●	●	●	●
Control panel – Coast to Coast	○	○	○	○
Control panel – JHub tablet display	○	○	○	○
Drawers – Ezi glide pullout	●	●	●	●
Drawers – large pot Ezi glide pullout*	●	●	●	●
Floor vinyl – durable modern design	●	●	●	●
Hatch roof 400 x 400	●	●	●	●
Lights – reading 12V & fan to bed ends	●	●	●	●
Lights – ceiling 12V LED 2 tone wireless	●	●	●	●
Lights – reading 12V at bed ends	●	●	●	●
Locks – positive to cupboard doors	●	●	●	●
Point – 12V cig socket	●	●	●	●
Power – 240V	●	●	●	●
Shower – modern design enclosed with exhaust fan*	●	●	●	●
Sink – stainless steel large bowl with Chop 'N' Serve board	●	●	●	●
Slideout – 12V electric	-	-	●	●
Splashbacks to kitchen area	●	●	●	●
Storage overheads with LED strip light*	●	●	●	●
Storage under seats	●	●	●	●
Tap – mains pressure to sink	●	●	●	●
TV outlet	●	●	●	●
Vanity – modern design*	●	●	●	●
Water filtration system to sink	○	○	○	○
Windows – tinted double glazed Euro push style with in built roller blinds	●	●	●	●
Appliances				
Air conditioning – cabinet mounted (14.44 & 16.49-4)	●	●	-	-
Air conditioning – roof mounted*	●	●	●	●
Cooktop – Smev 4 burner oven with 1 x 240V element	○	○	○	○
Cooktop – Smev 4 burner grill with 1 x 240V hotplate	●	●	●	●
Fridge – Dometic RM2553 150L*	●	●	-	-
Fridge – Thetford 174 L* (18.58 Pop Top)	●	●	●	●

	Pop Top	Outback	Caravan	Outback
Hot water service – 22 Lt Gas/240V to shower models*	●	●	●	●
Microwave	●	●	●	●
Rangehood – 12V LED light with twin fans	●	●	●	●
Satellite – Sphere dish	-	-	○	○
Stereo – CD/radio system with external speakers	○	○	○	○
TV aerial – 12V power boosted	○	○	○	○
TV Sensor Pro	○	○	○	○
TV/DVD – Sphere LED 12V	○	○	○	○
Washing Machine – Sphere 3kg*	○	○	○	○
Comfort				
Dinette seating in genuine designer leather	○	○	○	○
Dinette seating with durable designer fabric & non slip bases	●	●	●	●
Mattress – innerspring to fold down beds	●	●	●	●
Seat Foam – high resilience & antibacterial	●	●	●	●
Fitted bed sheets (Silver)	●	●	●	●

EXTERIOR FEATURES

- Standard
- Optional
- Not available
- * Selected layouts

	Pop Top	Outback	Caravan	Outback
Awning – rollout with LED strip light	●	●	●	●
Awning walls	○	○	○	○
BBQ – slideout*	○	○	○	○
Bike racks* (14.44-4 & 14.44-5)	○	○	-	-
Boot – side entry with large storage & LED light	●	●	●	●
Bumper bar	●	-	●	-
Bumper bar – RHS galvanised	-	●	-	●
Checkerplate – protective black side bottom panels	-	●	-	●
Coupling – shockproof swivel	-	○	-	-
Door – external trunk	●	●	●	●
External entertainment unit*	○	○	○	○
Front & rear smooth modern styling	●	●	●	●
Gas bayonet	○	●	○	●
Gas bottle 9kg – fixed (2 x 9kg on internal shower models)	●	●	●	●
Grey water tank (17.56-2 & 18.58)	○	○	○	○
Jack – for spare wheel	●	●	●	●
Jacks – corner supports AL-KO drop	○	●	○	●
Jacks – corner supports window	●	-	●	-
Jerry can holder	○	○	○	○
Light – LED annexe	●	●	●	●
Light – LED door handle	●	●	●	●
Mudflaps – Jayco	○	●	○	●
Pebbleguard stone protection at front	●	●	●	●
Plug car 12 pin	●	●	●	●
Power – 12V weather proof cig socket	○	●	○	●
Power – 240V weather proof outlet	●	●	●	●
Shower – external with pop up shower tent	○	○	○	○
Solar system – 120 watt & regulator	○	●	○	●
Solar system – 150 watt & regulator	○	○	○	○
Solar wiring provision	●	○	●	○
Step – single pull out	-	●	-	●
Suspension – axle & leaf springs	●	-	●	-
Suspension – JTECH Suspension Independent Coil	○	●	○	●
Table – external foldout	○	○	○	○
Tap – mains pressure to A-frame	●	●	●	●
Tent section – heavy duty canvas & Boltiflex	●	●	●	●
Ventilation – tent windows flyscreens	●	●	●	●

	Pop Top	Outback	Caravan	Outback
Water tank – 82L under floor (x2 on shower models)	●	●	●	●
Water Tank – additional 82L*	○	○	○	○
Water tank guard	●	●	●	●
Wheel – alloy spare	●	●	●	●
Wheel boxes – durable one piece	●	●	●	●
Wheels – 16" 245/70R16	-	○	-	○
Wheels – alloy with radial tyres	●	●	●	●
Wheels – nitrogen filled	●	●	●	●
Safety				
Brake magnets – AL-KO off-road	-	●	-	●
Brakes – electric	●	●	●	●
Brake unit – Tow Secure Emergency*	●	●	●	●
Cooktop flame failure device	●	●	●	●
Door – external triple lock with sep. security screen	●	●	●	●
eZylevel levelling device	○	○	○	○
ESC – AL-KO Electronic Stability Control device	○	○	●	●
Fire extinguisher	●	●	●	●
Lights – side LED running	●	●	●	●
Water filler – lockable	●	●	●	●
Construction				
Chassis – Endurance hot dipped galvanised	●	●	●	●
Chassis – main members 4" x 2"	●	-	●	-
Chassis – main members 6" x 2"	-	●	-	●
Furniture – Euro style with aluminium corner styles	●	●	●	●
Furniture – Euro style with aluminium seat framing	●	●	●	●
Roof – sandwich construction, one-piece fibreglass skin	●	●	●	●
Walls – fully insulated sandwich construction, one-piece fibreglass skin	●	●	●	●

TRIMS

The freedom you'll enjoy with your Jayco begins before you even place your order. We offer a wide range of great looking, hard-wearing, easy-to-clean finishes, fabrics and soft furnishings in both contemporary and classic styles, for you to choose and coordinate as you wish.

Curtains



Elvis P



Triumph Ash (optional)

Joinery/floor vinyl



Rovere joinery



Boston Dark floor vinyl

Benchtop/splashback



Furlo (optional)

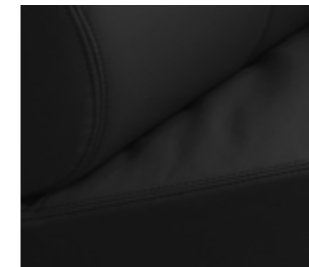


Talavera (optional)



Lucido Gloss splashback (standard)

Leather (optional)



Black



Gray



Mink



Orion



Sand Beige

Bolster/base cushion



Casablanca Dove /
Obsession Warm Haze



Thomas Eggplant / Aspire Eggplant



Eclipse / Bergen Noir



Bilson Granite / Byrne Granite



Palm Leaf Shark / Eternal Bungee



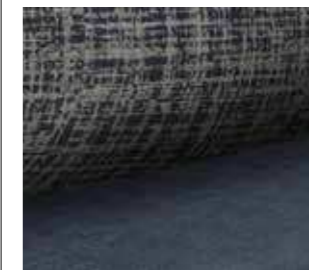
Kasual / Madrid



Arica / Zafira



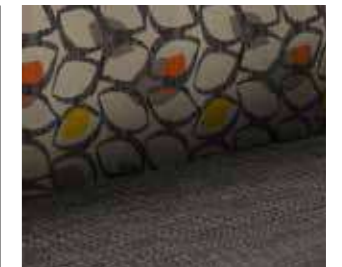
Bubble / Eternal Bungee



Letto / Metro Slate



Jacob Indigo / Ardo Denim



Scura Natural / Eternal Bungee



Eternal Bungee / Eternal Bungee



Obsession Warm Haze /
Obsession Warm Haze



Aspire Eggplant / Aspire Eggplant

BUILT IN AUSTRALIA SINCE 1975 AND STILL GOING STRONG

Jayco RVs have been helping Australians live their holiday dreams for over 40 years. We began in 1975, in the garage of a suburban home; our ambition, to build a better Camper Trailer. Today, Jayco is the most popular brand on the market. We've built, sold and supported more than 180,000 RVs to date, and now operate a 20-hectare manufacturing facility in Melbourne that employs a local workforce of 1,000+ people.

From that first Camper, Jayco has made high-quality products that offer outstanding value for money and lasting peace of mind. It's an advantage we deliver more than ever now through increased manufacturing efficiencies; proprietary technology, such as **JTECH SUSPENSION**, the **JAYCO TOUGH FRAME** and **JAYCO ENDURANCE CHASSIS**; and a commitment to using better materials, more precise craftsmanship, and ever-smarter design ideas and construction methods, for example:

- Our Eurostyle aluminium framed furniture features **protective curved extrusions** for strength and elegance, positive cupboard catches to secure your valuables in transit, and cabinet fronts that are screwed into place, not stapled
- Cushions are made from **high-resilience** foam, for years of comfort and support, and upholstery is treated with **antimicrobial protection** to inhibit mould, mildew and fungi, as well as dust mite protection to help prevent asthma and allergy-related conditions
- Tyres are **inflated with nitrogen** – not everyday air – reducing fuel usage, tyre wear and the risk of blowouts, while also improving ride and handling

State of the art complex

Built in Australia since 1975 – and still going strong. In 2007, Jayco moved into its current 50-acre state of the art complex at 1 Jayco Drive, Dandenong South, Victoria, with a purpose-built 60,000sqm undercover manufacturing complex. This is where all Jayco RVs are made.

Australia's most recognised brand for quality and affordable recreational vehicles, Jayco is a great success story of Australian manufacturing.

Employing over 1,000 Australians, Jayco continues as a locally owned family business.



CHOOSE JAYCO AND YOU'LL NEVER LOOK BACK

The freedom you experience when purchasing a Jayco extends beyond being able to travel where you want, when you want, for however long you want. There's also freedom from worry.

It comes from realising you've chosen the best value RV brand that money can buy, and that it will hold value better, for longer. It's also the peace of mind of knowing Jayco will always be there for you – through our comprehensive warranty, complimentary roadside assist service, or the convenience of Australia's largest RV dealer network.

Freedom from doubt, from second-guessing, from 'what if' – it's the feeling only an Australian-made Jayco can provide, and it's why our RVs are the first and only choice for so many.



NATIONWIDE SUPPORT 100+ SERVICE AND DEALER LOCATIONS

With more than 100 approved service centres nationwide, the Jayco support network is easily the best and most comprehensive in Australia. No matter where the road takes you, the expertise or spare parts you need are never far away.



3 YEARS' ROADSIDE ASSIST 24 HOURS A DAY, 365 DAYS OF THE YEAR

Every new Jayco RV comes with one feature that no other RV manufacturer can match— complimentary 24-hour Roadside Assist for three full years. No matter where you travel in Australia, as a Jayco owner, you're only ever a phone call away from the help you need in the event of an on road emergency. Please refer to jayco.com.au for more information.



WARRANTY PROGRAM 12 MONTHS' COMPREHENSIVE COVERAGE

The Jayco 12-month warranty is our promise that the RV you purchase will be free from poor workmanship and material defects. Regarded as the industry benchmark, it lets you relax on your travels, safe in the knowledge that Australia's largest RV dealer and service network has you covered.



BETTER VALUE MORE FEATURES FOR LESS

Every model Jayco comes equipped with standard features that other brands offer only as options. Buying power is the key—nearly one in two RVs on Australian roads carries our name. We're also the nation's most efficient RV manufacturer. By passing on the benefits of these production advantages, we ensure Jayco remains Australia's best value for money RV.



GREAT RESALE VALUE A SMARTER INVESTMENT IN THE LONG RUN

As you travel life's journey your needs may change. Your growing family may outgrow your current RV. Or you may retire and want to upgrade before embarking on the big trip you've always dreamed about. Whatever your reason for selling, you'll find a Jayco holds its value.

JAYCO.COM.AU 1300 JAYCO RV



To be the best, you need to work with the best



VISIT YOUR JAYCO DEALER:

